



**The Radio Amateur Satellite Corporation**

850 Sligo Ave. Suite 600

Silver Spring, MD 20910

Phone (301) 589-6062 • Fax (301) 608-3410

[www.amsat.org](http://www.amsat.org)

November 19, 2008

**AMSAT Installation Instructions for OrCAD 16.0, Revision F**

You will be using TCP port 5280 and another high numbered port (varies over time) in the background to contact the license server so you may need adjustments to your firewall to accommodate these connections.

**GETTING STARTED:**

Go to [Hhttp://www.cnssys.com/~w2gps/amsat\\_files/cadence/H](http://www.cnssys.com/~w2gps/amsat_files/cadence/H) and download the disk image files (ISO) for the latest version of OrCAD. Also download the ATxxxxxx.txt file and instruction files.

**User: amsat, PW eaglep3ehpsdr.**

Use these to create your own CD-R disks and then load a disk\_1 to begin the installation process. These images were created with MagicISO ([Hwww.magiciso.com](http://www.magiciso.com)H). Alternatively you can mount the ISO file without creating a disk using the freeware program MagicDisk ([Hhttp://www.magiciso.com/tutorials/miso-magicdisc-overview.htm](http://www.magiciso.com/tutorials/miso-magicdisc-overview.htm)H).

*The following instructions are for OrCAD 16.0 but should work for other versions as well.*

**The OrCAD 16.0 version created from the installation disks has program errors that may cause the programs to fail to work correctly. It is strongly recommended that you download the service pack file ISR3\_ORCAD16.00.005\_wint\_1of1.zip and install it immediately after completing the following instructions for installing the baseline program. Even then you may find that some modules like OrCAD PCB Editor report an error and will not start. If so follow the instructions on the last page.**

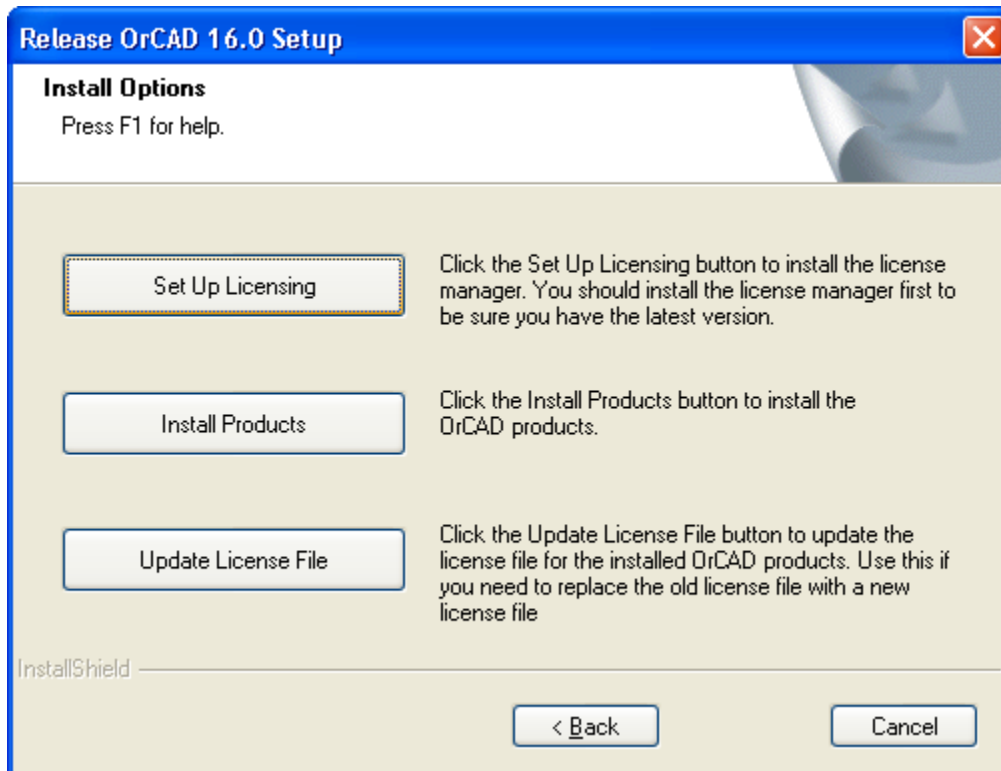
[Continued on next page]

Richard M. Hambly

W2GPS

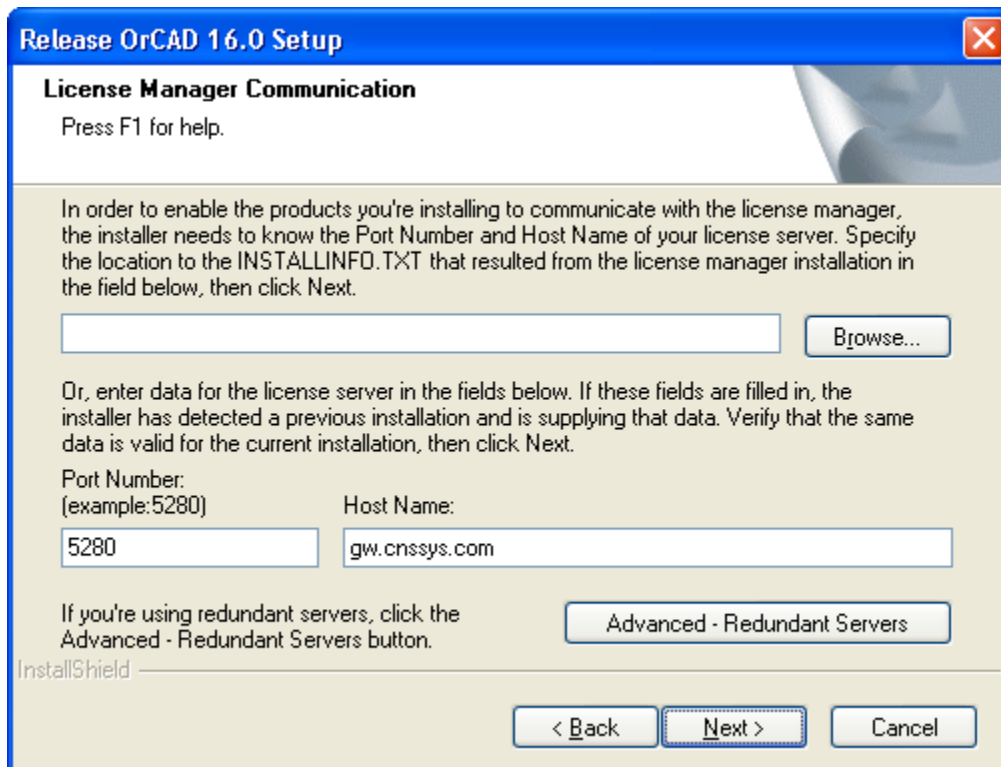
(410) 987-7835, [w2gps@amsat.org](mailto:w2gps@amsat.org)

When you start the installation you will see this screen.



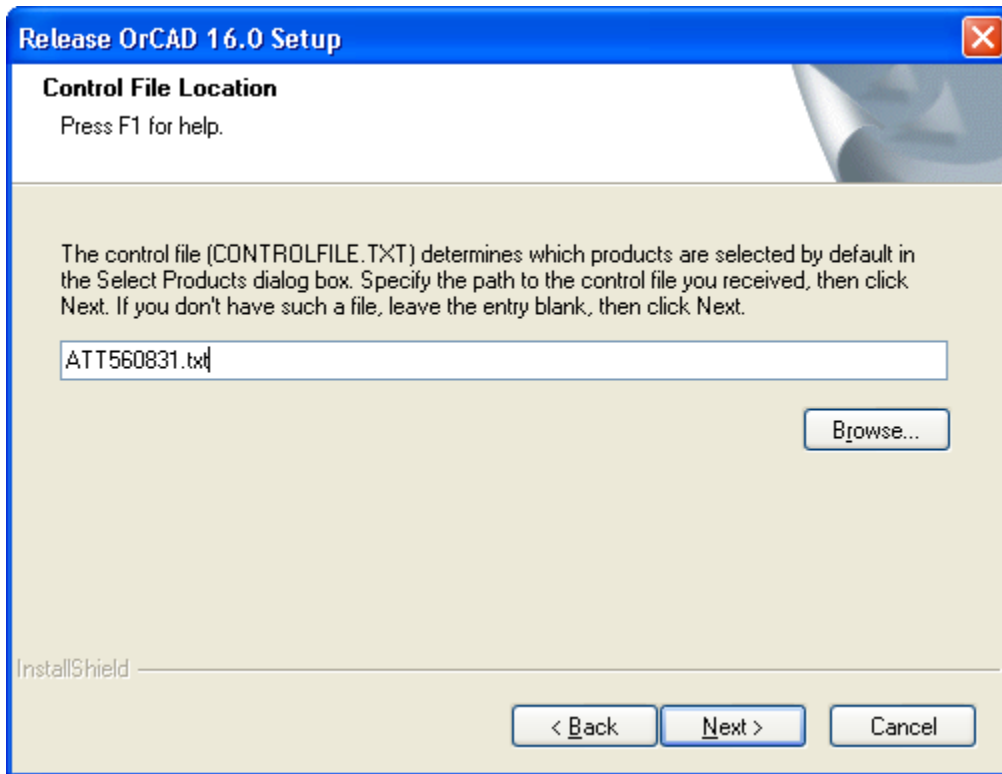
Pick “Install Products. Ignore the other two buttons; you do not want to go there.

When you see the following screen, fill it in exactly as shown.

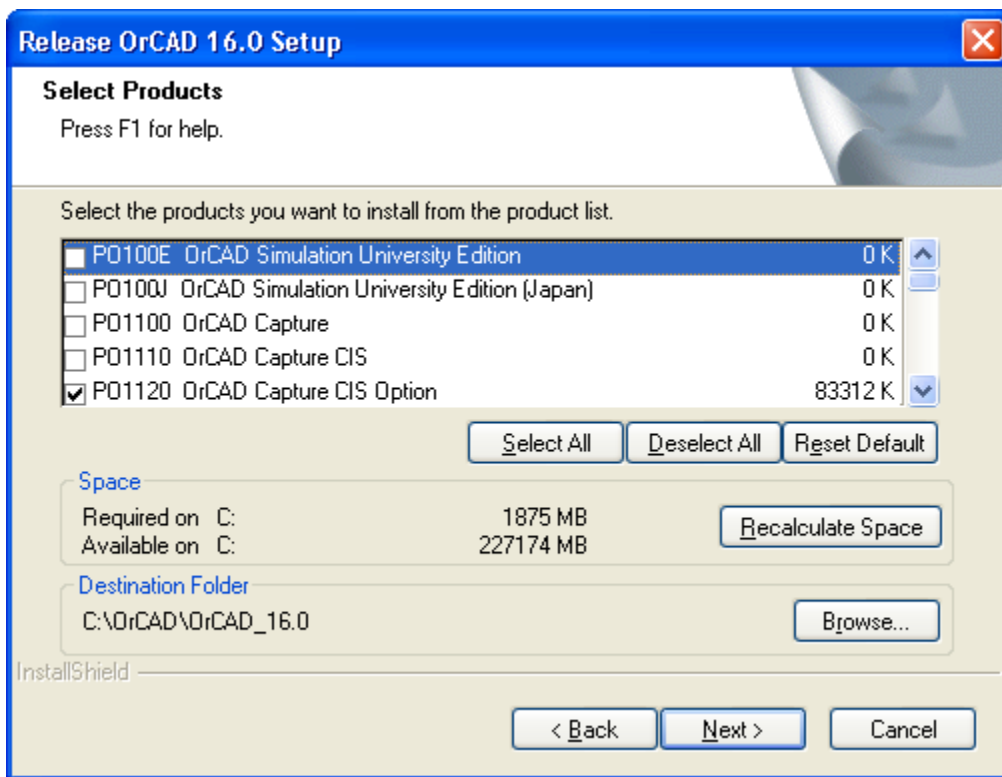


Remember, you will be using TCP ports 5280 and one other (often changing) user space port in the background to contact the license server so you may need adjustments to your firewall to accommodate these connections.

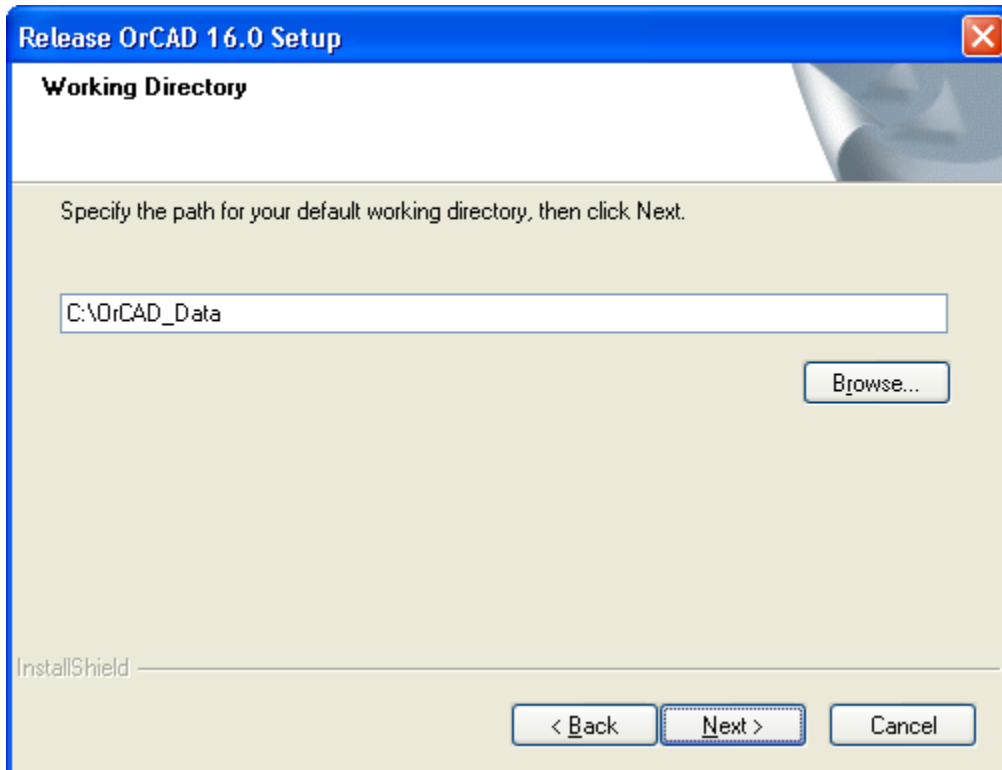
When asked for the control file point to the text file you downloaded. It can be anywhere you want, you won't need it again. **NOTE: THE FILE NAME MAY CHANGE SINCE THE SCREEN CAPTURE BELOW WAS TAKEN. Use whatever ATTx..x.txt file was included in the download directory.**

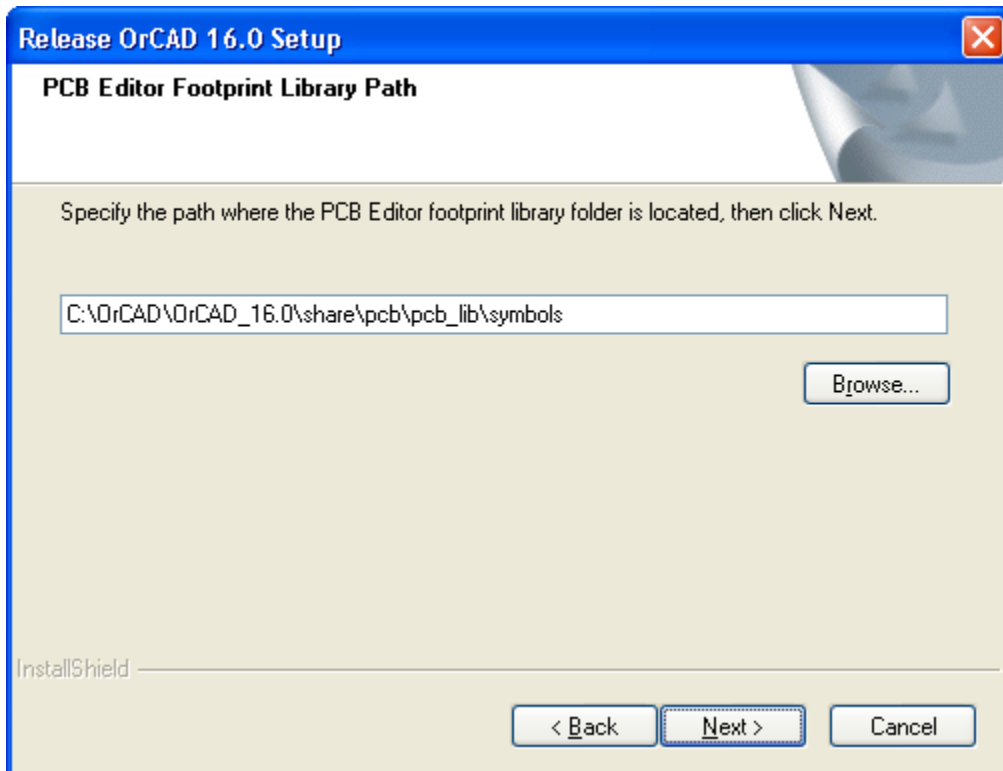
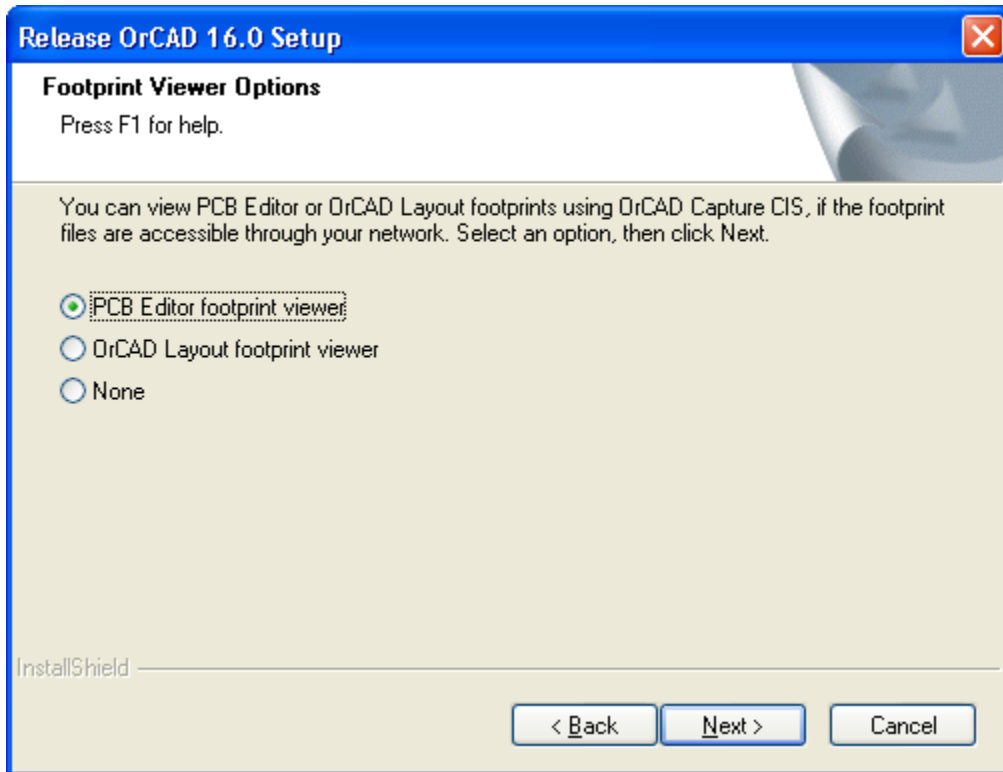


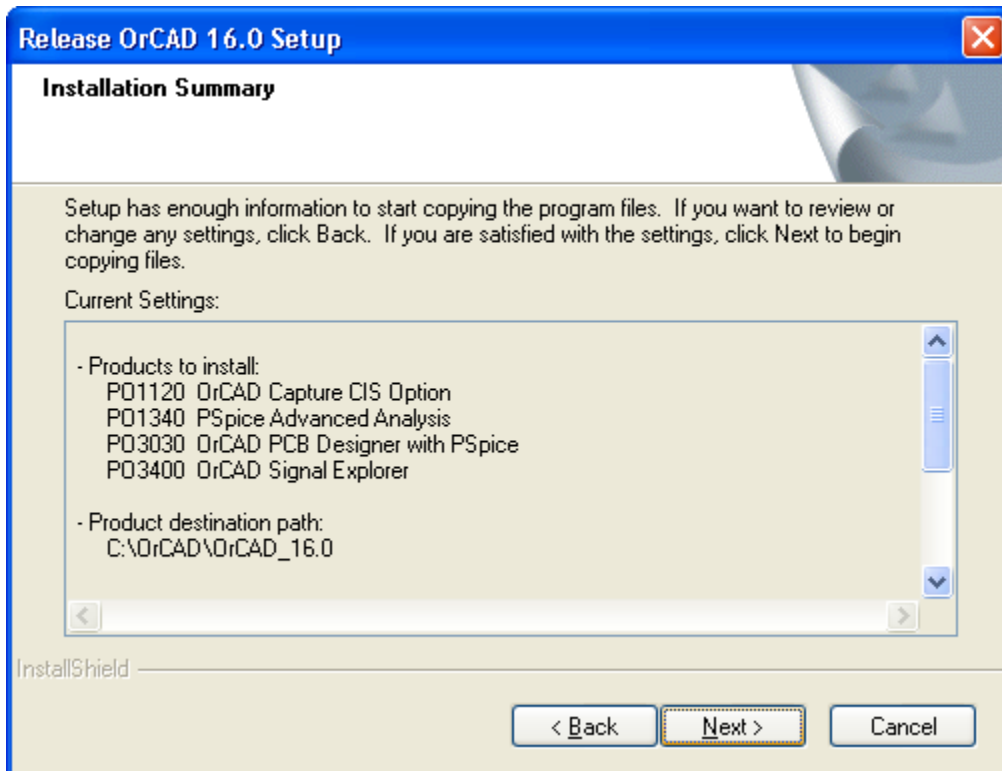
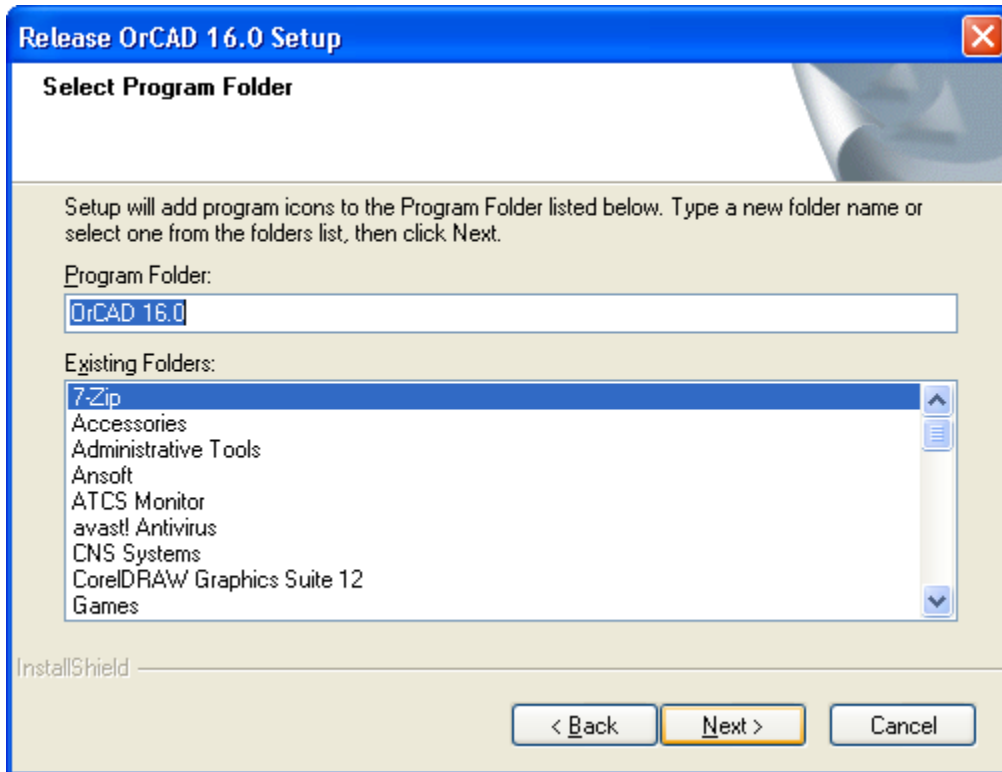
The result will be a sparse selection of packages to install. Do not worry, these are very powerful packages and there is a lot of overlap with the packages not selected. If you do load other packages the license server will reject them (unless they are subsets of a supported package like Capture or Capture CIS). Loading a subset would be redundant.

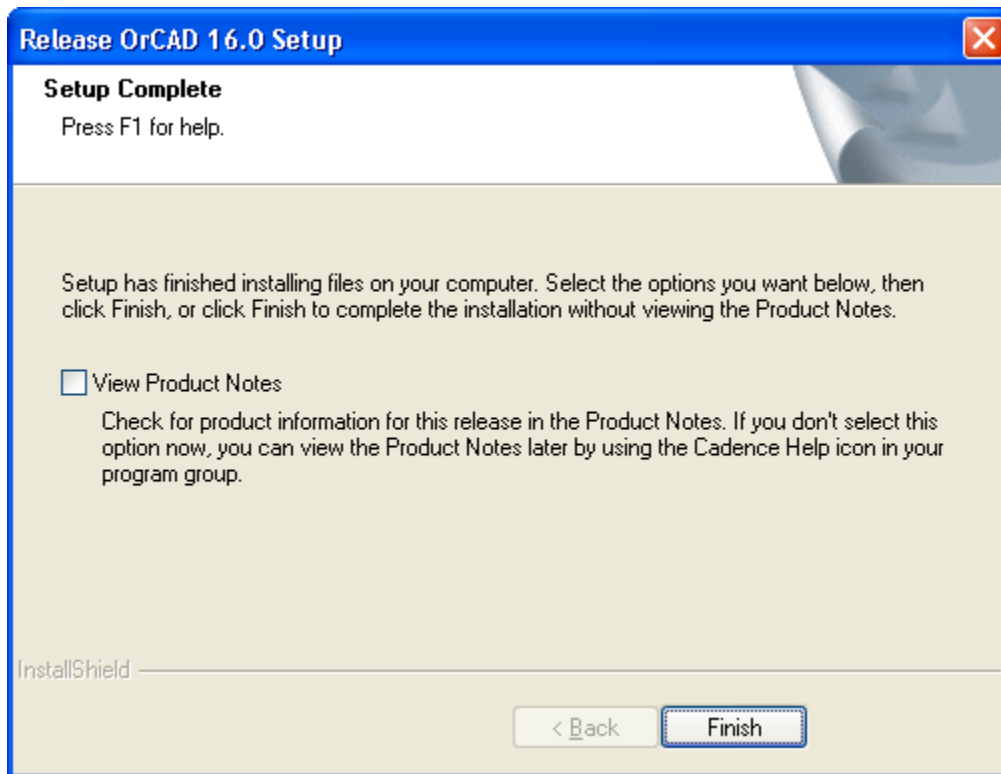


Here's how the rest of my screens looked as I made choices.









### EXTRA STEPS:

- The OrCAD 16.0 version created from the installation disks has program errors that may cause the programs to fail to work correctly. It is strongly recommended that you download the service pack file `ISR3_ORCAD16.00.005_wint_1of1.zip` and install it immediately after completing the following instructions for installing the baseline program.
- Even then you may find that some modules like OrCAD PCB Editor report an error and will not start.
  - Open the `PATH_Prefix_for_OrCAD.txt` file and copy its contents.
  - Next, go to Control Panel -> System -> Advanced tab -> Environment Variable and locate the variable Path. Paste what you copied onto the FRONT of the string in this window.
  - Review the contents of the PATH variable and remove entries that are redundant with those we just pasted in. Entries are delimited by semicolons (“;”).
  - Press ok to all the windows we opened up, re-launch OrCAD PCB Editor, and see if it resolves the errors you were seeing.