



The Radio Amateur Satellite Corporation

850 Sligo Ave. Suite 600

Silver Spring, MD 20910

Phone (301) 589-6062 • Fax (301) 608-3410

www.amsat.org

November 20, 2008

**AMSAT Installation Instructions for Mentor Graphics products
including PADS 2007, Revision B**

You will be using TCP port 1717 and 59303 in the background to contact the license server so you may need adjustments to your firewall to accommodate these connections.

GETTING STARTED:

Go to http://www.cnssys.com/~w2gps/amsat_files/mentor/ and download the disk image files (ISO) for the latest version of Mentor Graphics tools.

User: amsat, PW eaglep3ehpsdr.

Use these to create your own CD-R disks and then load a disk to begin the installation process. These images were created with MagicISO (www.magiciso.com). Alternatively you can mount the ISO file without creating a disk using the freeware program MagicDisk (<http://www.magiciso.com/tutorials/miso-magicdisc-overview.htm>).

Do not share this information with anyone. All authorizations should come direct from AMSAT. The password may change without notice.

[Continued on next page]

Richard M. Hambly

W2GPS

(410) 987-7835, w2gps@amsat.org

Mentor Graphics Licensed Ansoft Packages

For information on what these packages are and what they do see <http://www.mentor.com/>. The categories below are keyed to <http://www.mentor.com/products/>.

It is expected that most AMSAT users will want to focus on the PADS schematic capture and PCB Layout flow below.

Electronic System Level Design

233050 Visual Elite -MD (design and integration platform with which designers and system architects can intuitively capture and connect SystemC and HDL blocks into complex System-on-Chip (SoC) and systems.)

- See http://www.mentor.com/products/esl/system_integration/visual_elite/
- Set # 232351 Visual Elite, Version 2007.03 V3.9.3 for Linux, Solaris and Windows
 - 232354_Visual_Elite_Version_2007.03_V3.9.3_for_Linux_and_Solaris.iso
 - 232355_Visual_Elite_Version_2007.03_V3.9.3_for_Window.iso

233051 Vista -MD (SystemC debug toolset, providing hardware and C/C++ oriented views and debugging mechanisms)

- See http://www.mentor.com/products/esl/system_debug/vista/
- Set # 232356 Vista, Version 2007.03 V1.3.0
 - 232359_Vista_Version_2007.03_V1.3.0_Linux_and_Solaris.iso
 - 232360_Vista_Version_2007.03_V1.3.0_Windows_x86.iso

233501 Platform Express 3.6.1 (platform-based design tool that enables the rapid creation, configuration and verification of sophisticated platform-based System-on-Chip (SoC) designs by simply dragging and dropping IP onto a design.)

- See http://www.mentor.com/products/esl/platform_based_design/px_client/
- Set # 233501 Platform Express Version 3.6.1 for Linux and Windows
 - 233504_Platform_Express_Version_3.6.1_for_Linux_and_Windows.iso

Scalable Verification

229424 Questa SV/AFV (Advanced Verification Environment)

- http://www.mentor.com/products/fv/abv/questa_afv/
- http://www.mentor.com/products/fv/abv/questa_sv/
- Set # 233701 Questa SV/AFV, Version 6.3a for Linux, Solaris and Windows
 - 233711_Questa_SV_AFV_Version_6.3a_for_Linux_and_Solaris.iso
 - 233712_Questa_SV_AFV_Version_6.3a_for_Windows.iso

232678 Questa Codelink Pro 2.0b (source-level debug for code executing on RTL processor models from ARM and MIPS.)

- See http://www.mentor.com/products/fv/ta/questa_codelink/
- Set # 232678 Questa Codelink Pro Version 2.0b for Linux and Solaris
 - 232681_Questa_Codelink_Pro_Version_2.0b_for_Linux_and_Solaris.iso

225321 0-In (Formal Verification)

- 0-In Formal Verification (http://www.mentor.com/products/fv/abv/0-in_fv/)
- 0-In® Assertion Synthesis (<http://www.mentor.com/products/fv/cdv/0-in/>)
- 0-In® CheckerWare® (<http://www.mentor.com/products/fv/cdv/checkerware/>)
- 0-In® CheckerWare® Compiler (<http://www.mentor.com/products/fv/abv/checkerware/>)
- 0-In® Clock-Domain Crossing (<http://www.mentor.com/products/fv/abv/0-in-cdc/>)
- Set # 233441 0-In for HP-UX 11j, PA-RISC, Linux x86 and x86-64, Solaris 8/9/10 and UltraSPARC
 - 233445_0-In-V2.5d_Linux_Disk_1_of_4.iso
 - 233446_0-In-V2.5d_Linux_Disk_2_of_4.iso

- 233447_0-In-V2.5d_Solaris_Disk_3_of_4.iso
 - 233448_0-In-V2.5d_HP-UX_and_PA_RISC_Disk_4_of_4.iso
- 229431 XlibCreator 2006a (Intelligent Testbench Automation)
- Set # 229431 XlibCreator Version 2006a for Solaris and Windows
 - 229434_XlibCreator_Version_2006a_for_Solaris_and_Windows.iso
- 230581 inFact 3.1.0 (Intelligent Testbench Automation)
- See http://www.mentor.com/products/fv/ta/questa_infact/
 - Set # 230581 inFact for Linux x86 and Solaris 8, UltraSPARC
 - 230584_inFact_Version_3.1.0_Linux_and_Solaris.iso
- 232071 Seamless FPGA 5.4 2007.1 (enables the concurrent verification of hardware and software in both Xilinx Virtex-II Pro and Virtex-4 devices and the systems that embed them.)
- Set # 232071 Seamless FPGA Version 5.4 2007.1
 - 232074_Seamless_FPGA_Version_5.4_2007.1_Solaris_8_and_UltraSPARC.iso
 - 232075_Seamless_FPGA_Version_5.4_2007.1_Linux_and_Windows.iso
- 232936 Seamless CVE (a virtual prototyping tool that enables embedded code execution against your Verilog or VHDL hardware simulation.)
- See http://www.mentor.com/products/fv/hwswh_coverification/seamless_fpga/
 - Set # 209457 Seamless Access Code Card
 - 212189_Seamless_CVE_Fulfillment_Card – this is not a disk. If someone needs this disk contact w2gps@amsat.org to get the disk through the fulfillment process.
- 206580 FormalPro (Equivalence Checking)
- <http://www.mentor.com/products/fv/ev/formalpro/>
 - Set # 233053 FormalPro for Linux, Solaris, UltraSPARC, Version 2007.1
 - 233056_Formal_Pro_Version_2007.1_Linux_x86_x86-64_Solaris_UltraSPARC.iso
- 203579 Analog/Mixed-Signal Simulation
- http://www.mentor.com/products/fv/ams/advance_ms/
 - Set # 231592 Analog/Mixed Signal (AMS) Version AMS2006.2 for Windows 2000/XP, x86
 - 231595_Analog_Mixed_Signal_Version_AMS2006.2.iso
 - Set # 233082 Analog/Mixed Signal (AMS) Version AMS2006.2 for Linux x86, x86-64 and Solaris 8/9/10 and UltraSPARC
 - 233086_Analog_Mixed_Signal_Version_2007.1_Linux_x86_Disk_1_of_3.iso
 - 233087_Analog_Mixed_Signal_Version_2007.1_Linux_x86_64_Disk_2_of_3.iso
 - 233088_Analog_Mixed_Signal_Version_2007.1_Solaris_Disk_3_of_3.iso

PADS

- 219051 PADS 2007 Flow (Schematic Capture and PCB Design Suite)
- For PADS see http://www.mentor.com/products/pcb/pads/product_index
 - HyperLynx tools eliminate signal integrity, crosstalk, and EMC problems early, allowing you to "get it right the first time. For HyperLynx see http://www.mentor.com/products/pcb/pads/analysis_verification/hyperlynx/
 - Set # 231550 PADS Flow 2007
 - 231552_PADS_2007_Disk_1_of_2.iso
 - 231811_PADS_2007_Disk_2_of_2.iso
 - Set # 230733 HyperLynx for Windows
 - 230739_HyperLynx_for_Board_Station_XE_2006_Flow_Windows_x86.iso
 - Set # 230734 HyperLynx for Solaris 8/9, UltraSPARC, Version 7.7
 - 230740_HyperLynx_for_Board_Station_XE_2006_Flow_Solaris_8_and_9_and_UltraSPARC.iso

Board Station

225644 BoardStation Flow (advanced PCB layout technology)

- http://www.mentor.com/products/pcb/boardstation/physical_design/boardstation_xe/
- Set # 228323 for HP-UX 11.0/11i and PA-RISC, Version 2006
 - 228325_Board_Station_XE_2006_Flow_HP-UX_PA-RISC_Disk_1_of_3.iso
 - 228326_Board_Station_XE_2006_Flow_HP-UX_PA-RISC_Disk_2_of_3.iso
 - 228327_Board_Station_XE_2006_Flow_HP-UX_PA-RISC_Disk_3_of_3.iso
- Set # 228330 for Solaris 8/9/10, UltraSPARC, Version 2006
 - 228372_Board_Station_XE_2006_Flow_Solaris_8_9_and_10_and_UltraSPARC_Disk_1_of_3.iso
 - 228373_Board_Station_XE_2006_Flow_Solaris_8_9_and_10_and_UltraSPARC_Disk_2_of_3.iso
 - 228374_Board_Station_XE_2006_Flow_Solaris_8_9_and_10_and_UltraSPARC_Disk_3_of_3.iso
- Set # 228377 for Linux, Version 2006
 - 228379_Board_Station_XE_2006_Flow_RHE3_4_x86_Disk_1_of_3.iso
 - 228380_Board_Station_XE_2006_Flow_RHE3_4_x86_Disk_2_of_3.iso
 - 228381_Board_Station_XE_2006_Flow_RHE3_4_x86_Disk_3_of_3.iso
- Set # 228384 for Windows 2000/XP/Server 2003. x86, Version 2006
 - 228386_Board_Station_XE_2006_Flow_Windows_Disk_1_of_3.iso
 - 228387_Board_Station_XE_2006_Flow_Windows_Disk_2_of_3.iso
 - 228388_Board_Station_XE_2006_Flow_Windows_Disk_3_of_3.iso

FPGA/PLD

228763 HDL Designer Series 2006.1 (HDL Designer delivers solutions optimizing the design creation, synthesis and verification processes of advanced ASIC and FPGA designs in a team environment)

- http://www.mentor.com/products/fpga_pld/hdl_design/hdl_designer_series/
- Set # 228763 HDL Designer Series 2006.1 for HP-UX, 11j, PA-RISC, Linux, Solaris, Windows 2000/XP
 - 231084_HDL_Designer_Series_2006.1_for_Linux_and_Windows_Disk_1_of_2.iso
 - 231085_HDL_Designer_Series_2006.1_for_HP_and_Solaris_Disk_2_of_2.iso

205167 ModelSim SE (ModelSim Special Edition is a simulation and debug environment)

- http://www.mentor.com/products/fpga_pld/simulation/modelsim_se/
- Set # 233673 ModelSim SE Version 6.3a
 - 233583_ModelSim_SE_6.3a_for_Linux_Solaris_UltraSPARC.iso
 - 233584_ModelSim_SE_6.3a_for_Windows.iso

201704 Precision Synthesis (Advanced FPGA Synthesis Tool)

- http://www.mentor.com/products/fpga_pld/synthesis/wcps
- Set # 231956 Precision Synthesis Version 2006a update2 for Linux, Solaris and Windows
 - 231959_Precision_Synthesis_Version_2006a_update2_Linux_Solaris_Windows

204772 Leonardo Spectrum (synthesis tool for designing PLDs, FPGAs and ASICs, in VHDL or Verilog)

- http://www.mentor.com/products/fpga_pld/synthesis/leonardo_spectrum/
- Set # 232931 Leonardo Spectrum Version 2007a for HP-UX, 11j, PA-RISC, Solaris, Windows 2000/XP
 - 232934_Leonardo_Spectrum_Version_2007a_Solaris_and_Windows.iso
 - 232935_Leonardo_Spectrum_Version_2007a_for_HP_and_PA-RISC.iso

Design-For-Test (DFT)

208781 Design-for-Test (Methodology to ensure a design works correctly after manufacturing)

- <http://www.mentor.com/products/dft/>
- Set # 233240 Design-for-Test for Linux and Solaris UltraSPARK Version 8.2007_2
 - 233253_Design_for_Test_Volume_1_V8.2007_2_Linux_x86_x86-64_Solaris_UltraSPARK.iso

System Modeling

232622 SystemVision 5.0 Professional (System modeling solution that allows system engineers and engineers from multiple disciplines to communicate, simulate, and optimize designs)

- See http://www.mentor.com/products/sm/system_integration_simulation_analysis/systemvision/
- Set # 232622 SystemVision Professional Version 5.0 for Windows 2000/XP
 - 232625_SystemVision_Professional_Version_5.0_for_Windows.iso
 - 232626_SystemVision_Professional_Overlay_Version_5.0_for_Windows.iso

232095 BridgePoint 1.4.2 (platform-independent modeling for real-time embedded system designs)

- See http://www.mentor.com/products/sm/uml_suite/bridgepoint_builder/
- Set # 232095 BridgePoint Version 1.4.2 for Windows
 - 232098_BridgePoint_Version_1.4.2_Windows.iso

Others - Uncategorized

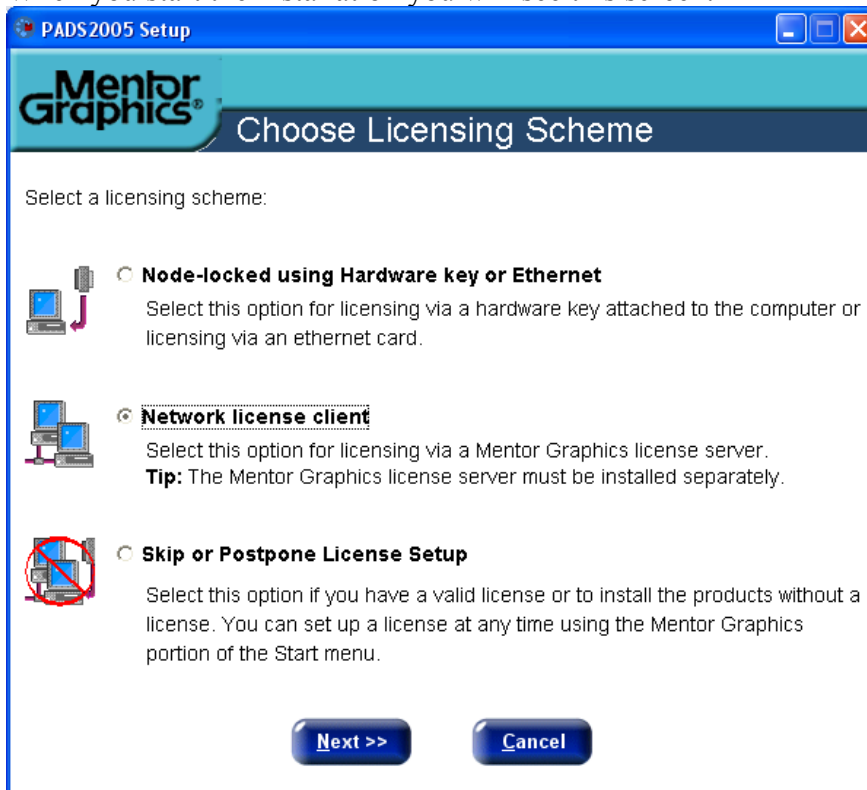
232551 Perspecta ARM Family 3.2 (system-level modeling and validation)

- Set # 232551 Perspecta ARM Family Version 3.2 for Linux and Windows XP
 - 232554_Perspecta_ARM_Family_Version_3.2_for_Linux_and_Windows-XP.iso

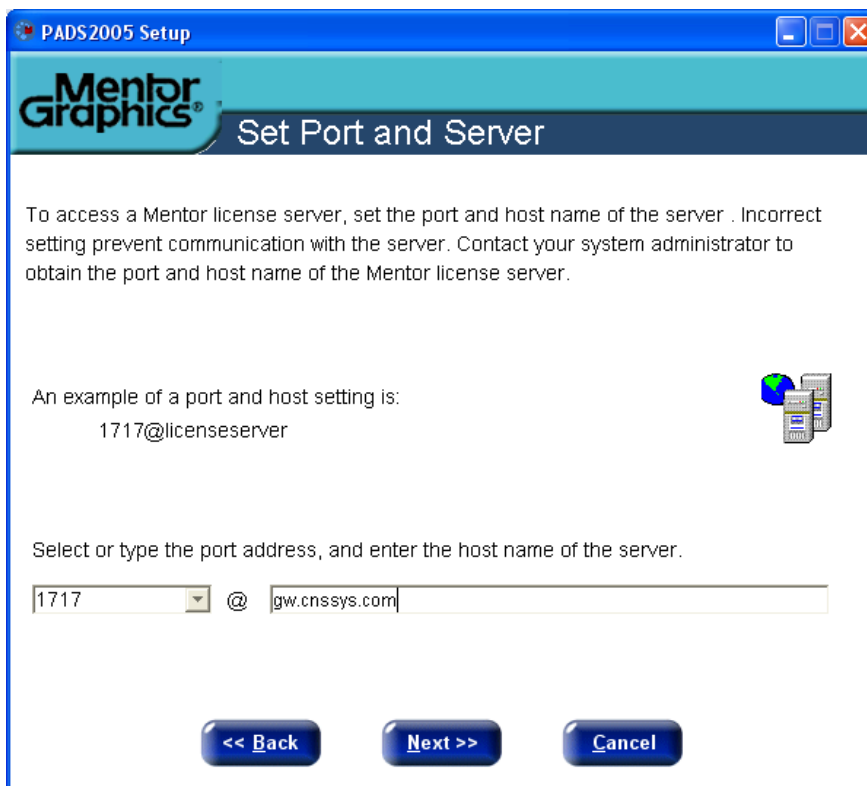
233411 Perspecta 3.2.2 (system-level modeling and validation)

- Set # 233411 Perspecta Version 3.2.2 for Linux and Windows XP
 - 233414_Perspecta_Version_3.2.2_for_Linux_and_Windows-XP_Disk_1_of_2.iso
 - 233415_Perspecta_Version_3.2.2_for_Linux_and_Windows-XP_Disk_2_of_2.iso

From the splash screen select Install PADS Products.
When you start the installation you will see this screen.



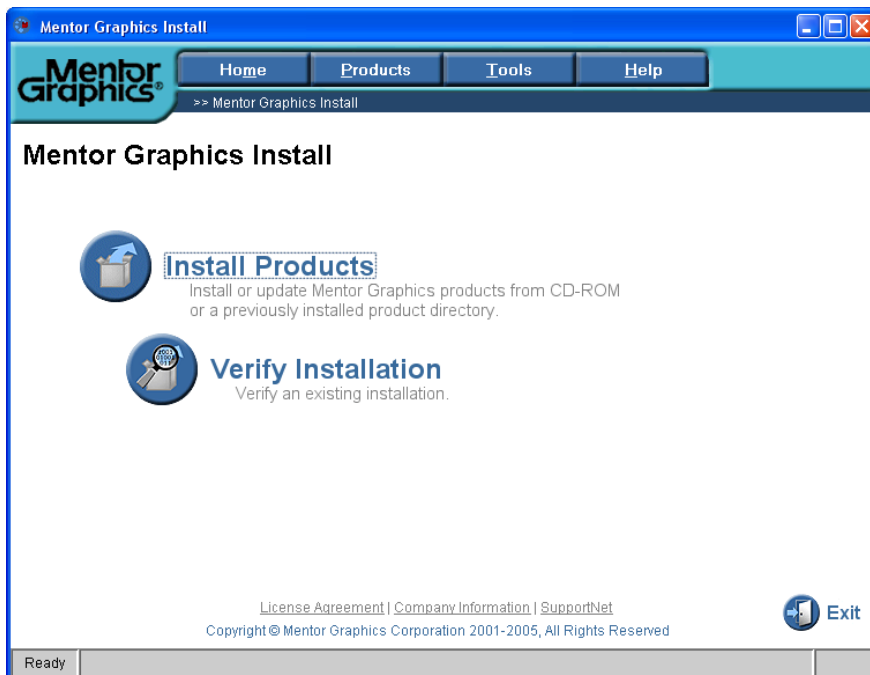
Choose Network license client as shown and click Next.
When you see the following screen, fill it in exactly as shown.

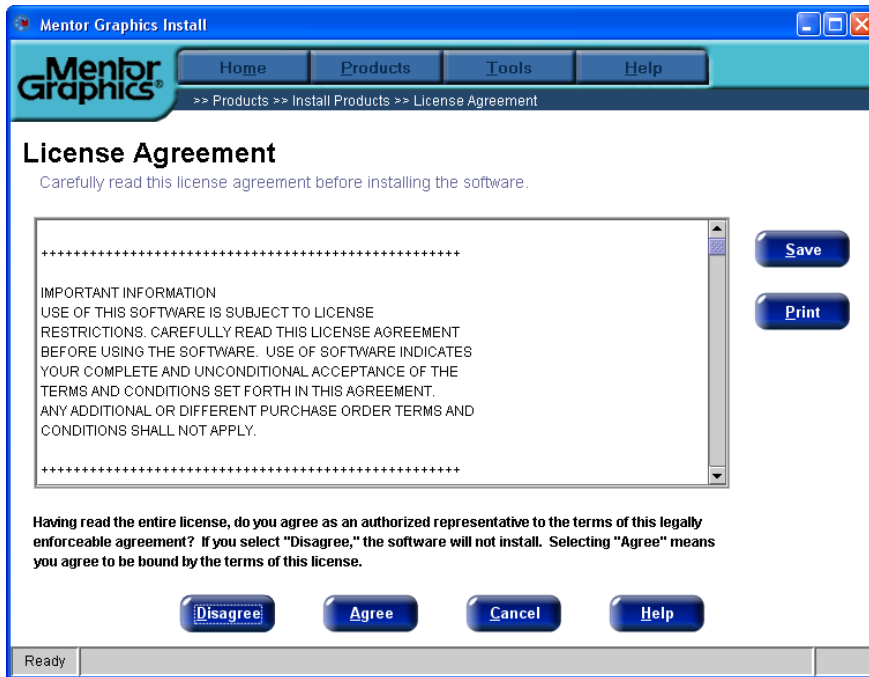


Set the default project path wherever you like in this screen.

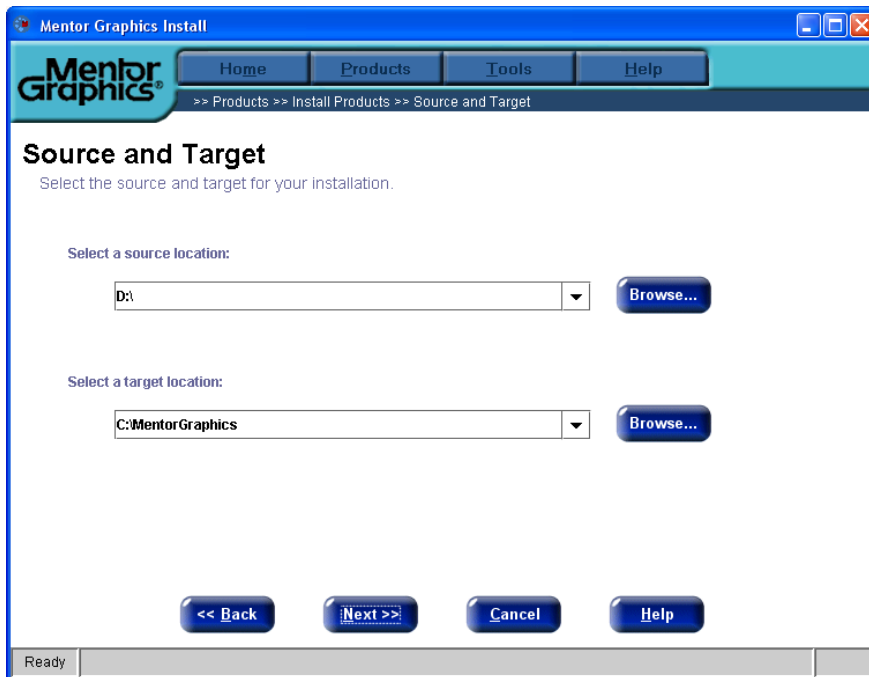


Now it is time to start installing the software. Click on Install Products.

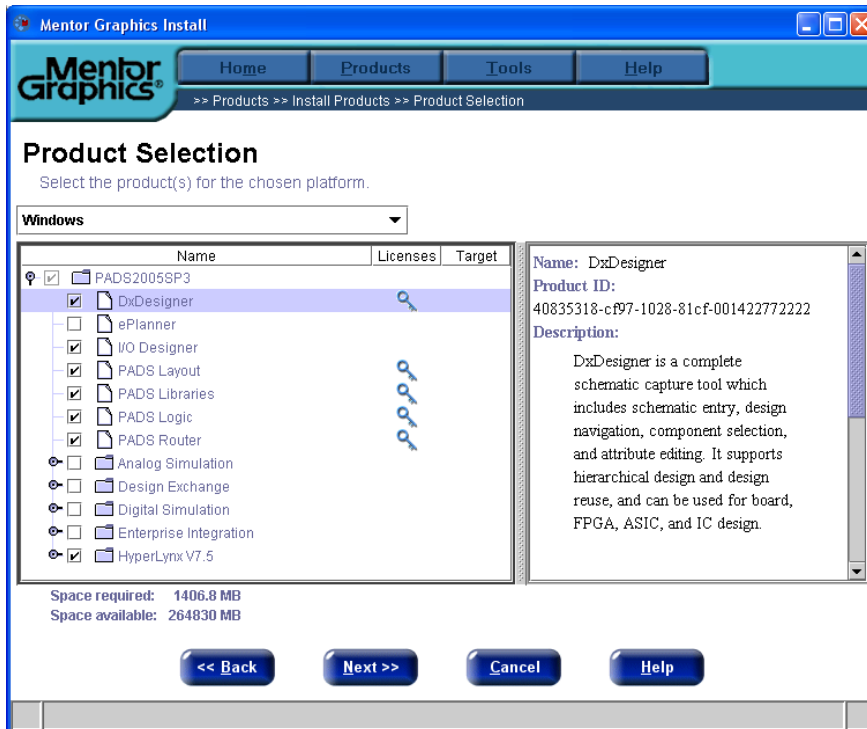




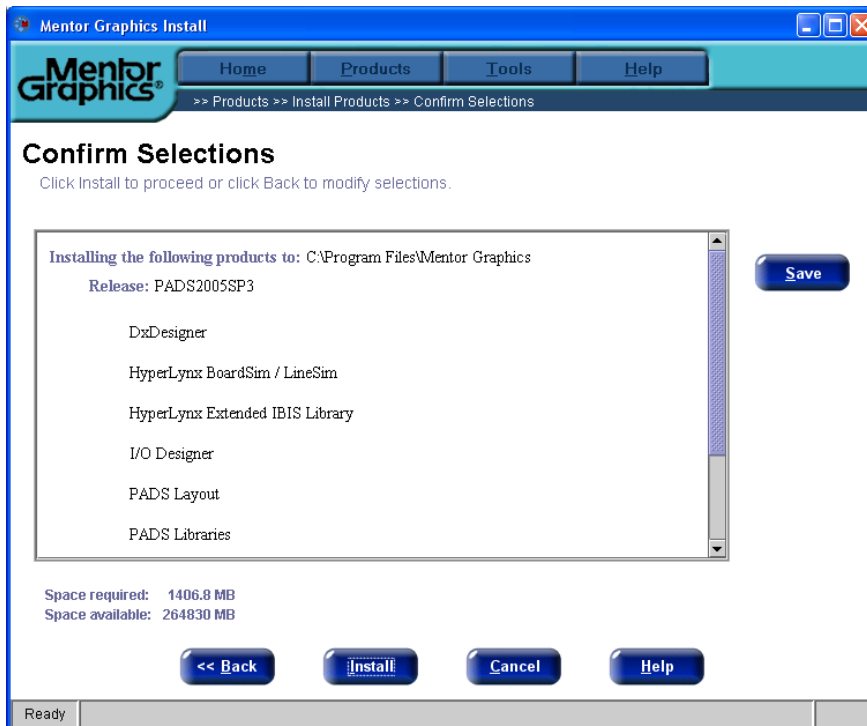
Read the license agreement and click on Agree.



The packages to install will already be checked as shown below. If you load other packages the license server will reject them so don't bother.



Click Next and you will see a confirmation screen.



Remember, you will be using TCP ports 1717 and 59303 in the background to contact the license server so you may need adjustments to your firewall to accommodate these connections.